

Qty. Description

1 **Unilift KP 150 AV 1**



Note! Product picture may differ from actual product

Product No.: [011H1400](#)

Submersible drainage pump

Vertical single-stage stainless steel submersible pump with vertical discharge port and integrated

Phase: submersible 1-phase canned motor in insulation class F with thermal overload protection.

The pump is fitted with suction strainer and a

Cable length: carrying handle and is supplied with a 5 m mains cable and vertical level switch for automatic start and stop.

The impeller is a semi-open impeller for 10 mm free passage suitable for pumping groundwater, surface water, rain water and similar liquids.

The pump has a double shaft seal consisting of two lip seals with grease in-between.

The pump has an outer casing ensuring continuous cooling of the motor by the pumped liquid. The rotor shaft operates in two maintenance-free carbon bearings cooled by the pumped liquid

The motor is filled with a non-toxic motor liquid.

Liquid:

Liquid temperature range: 0 .. 50 °C

Density: 998.2 kg/m³

Technical:

Maximum particle size: 10 mm

Materials:

Pump housing: Stainless steel
DIN W.-Nr. 1.4301
AISI 304

Impeller: Stainless steel
DIN W.-Nr. 1.4031
AISI 304

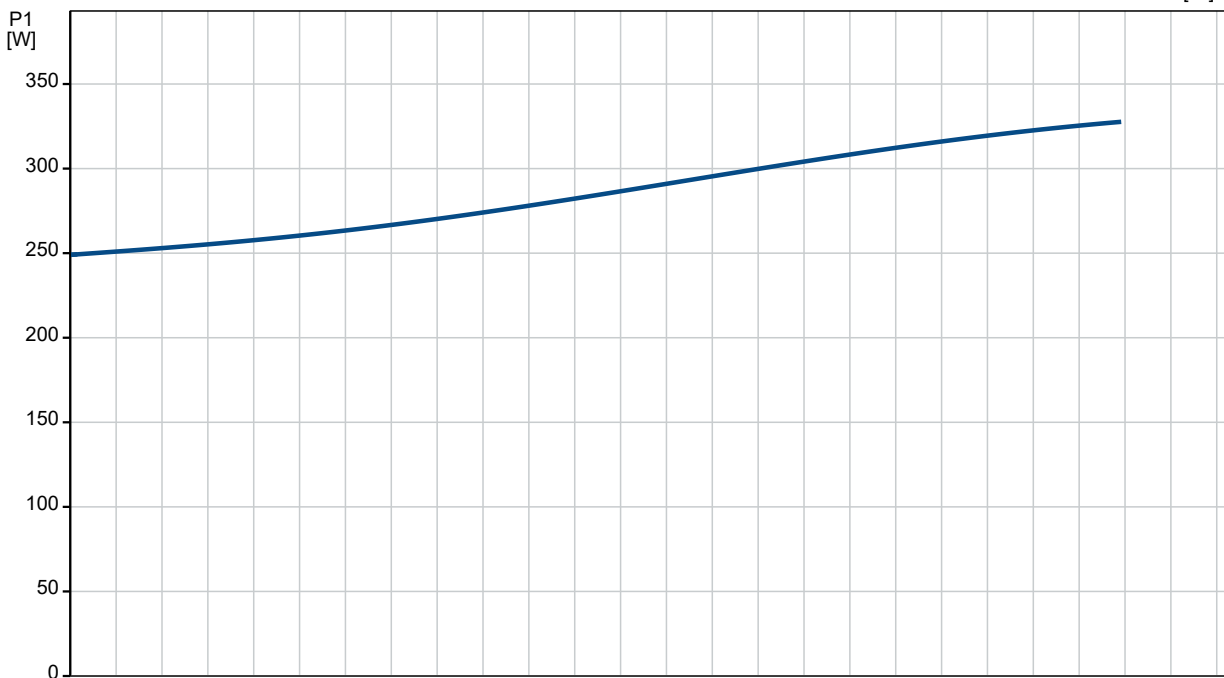
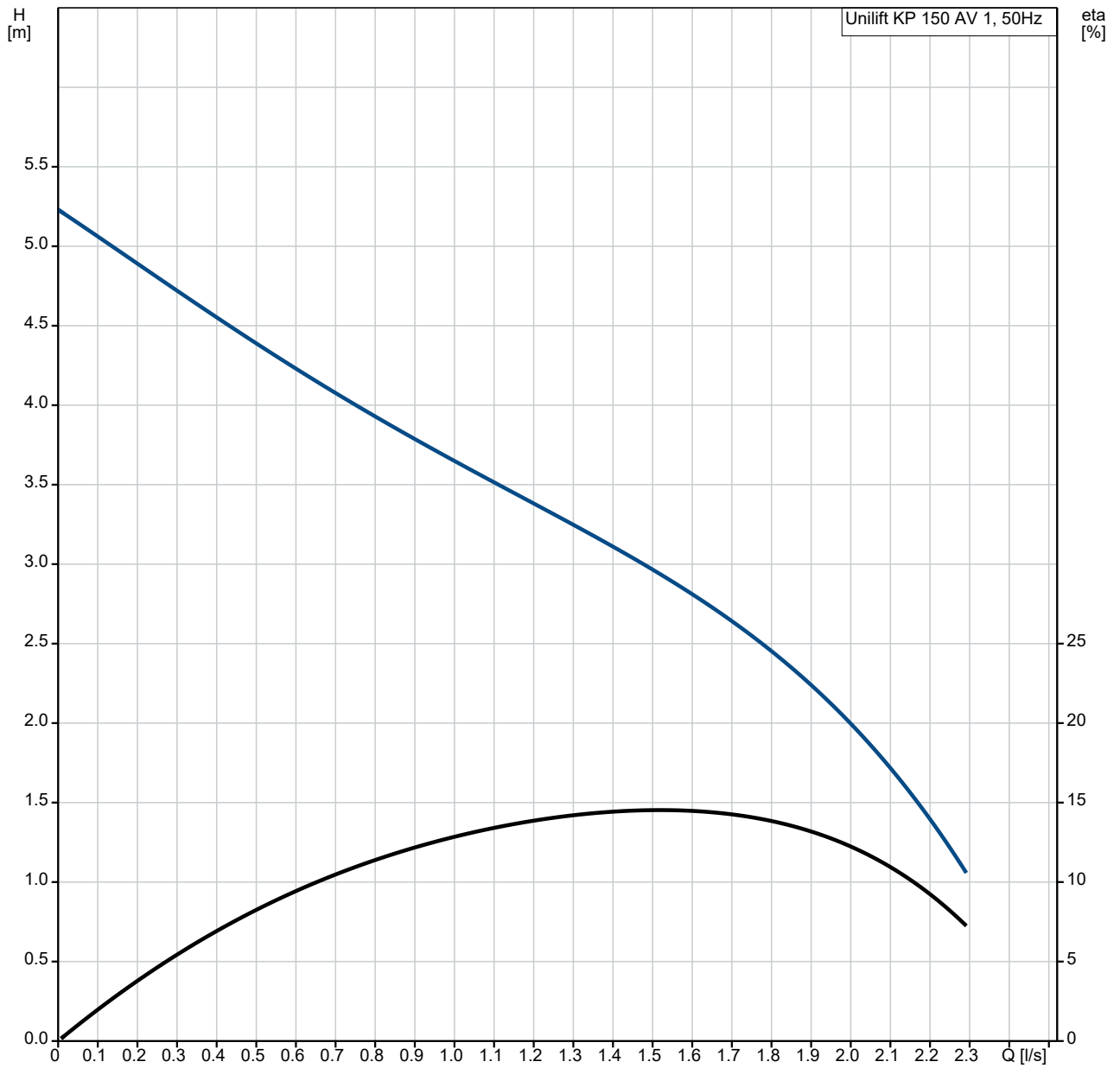
Installation:

Pump outlet: Rp 1 1/4

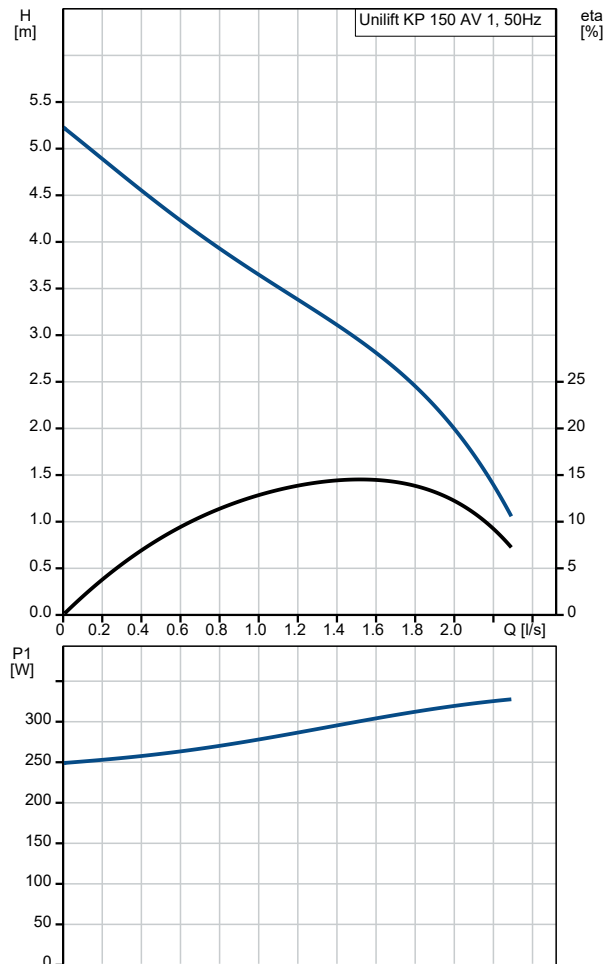
Maximum installation depth: 2 m

| Qty. | Description |
|------|---|
| | <p>Electrical data:</p> <p>Power input - P1: 300 W</p> <p>Mains frequency: 50 Hz</p> <p>Rated voltage: 1 x 220-230 V</p> <p>Rated current: 1.3 A</p> <p>Capacitor size - run: 8 µF/400 V</p> <p>Enclosure class (IEC 34-5): IP68</p> <p>Insulation class (IEC 85): F</p> <p>Length of cable: 5 m</p> <p>Type of cable plug: SCHUKO</p> <p>Others:</p> <p>Net weight: 6.5 kg</p> <p>Gross weight: 7 kg</p> <p>Shipping volume: 0.013 m³</p> |

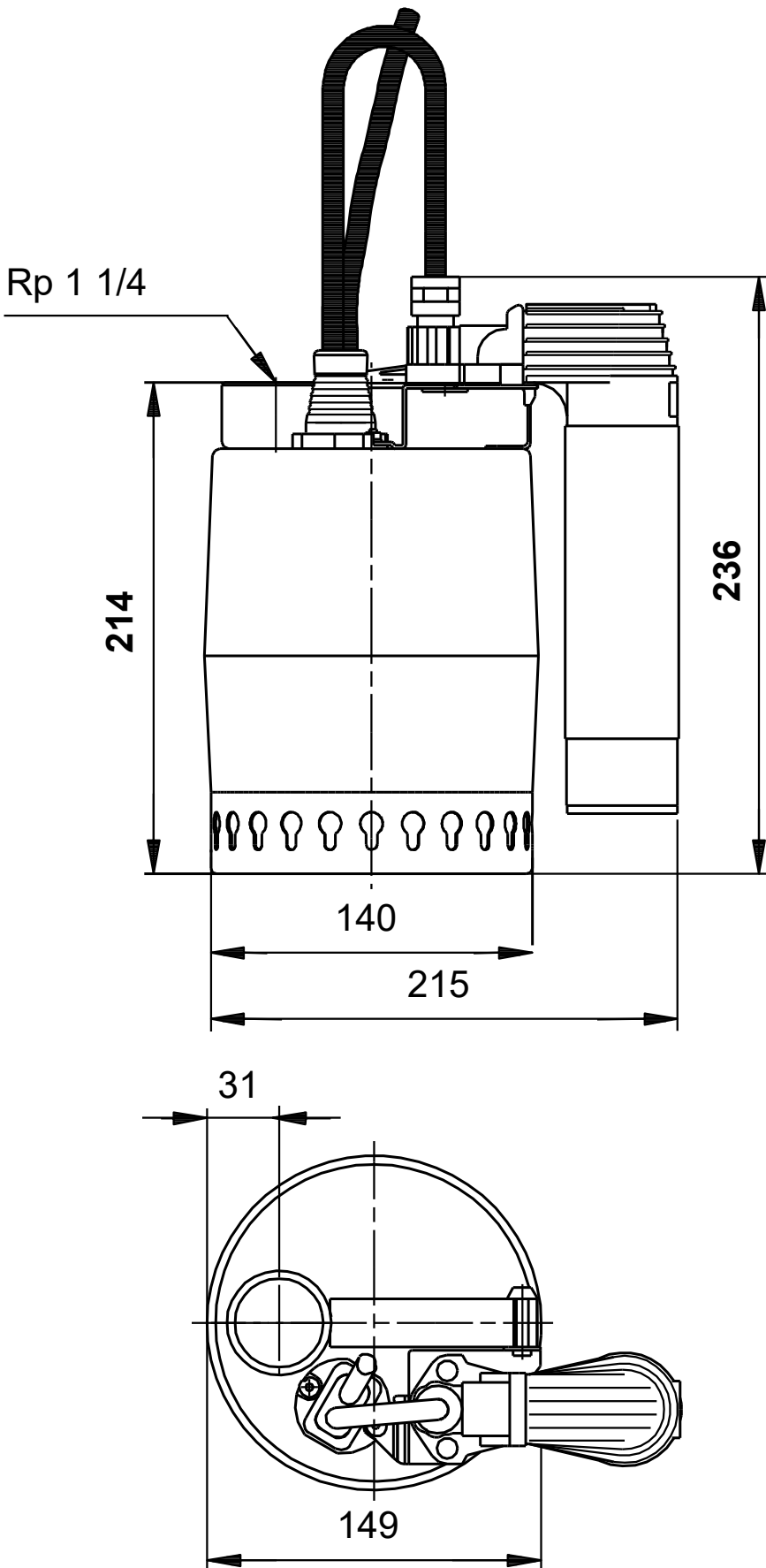
011H1400 Unilift KP 150 AV 1 50 Hz



| Description | Value |
|-----------------------------|-------------------------|
| General information: | |
| Product name: | Unilift KP 150 AV 1 |
| Product No: | 011H1400 |
| EAN number: | 5700391115448 |
| Price: | |
| Technical: | |
| Maximum flow: | 2.36 l/s |
| Max flow: | 2.36 l/s |
| Head max: | 5.5 m |
| Maximum particle size: | 10 mm |
| Model: | A |
| Materials: | |
| Pump housing: | Stainless steel |
| Pump housing: | DIN W.-Nr. 1.4301 |
| Pump housing: | AISI 304 |
| Impeller: | Stainless steel |
| Impeller: | DIN W.-Nr. 1.4031 |
| Impeller: | AISI 304 |
| Installation: | |
| Pump outlet: | Rp 1 1/4 |
| Maximum installation depth: | 2 m |
| Liquid: | |
| Liquid temperature range: | 0 .. 50 °C |
| Density: | 998.2 kg/m ³ |
| Electrical data: | |
| Power input - P1: | 300 W |
| Mains frequency: | 50 Hz |
| Rated voltage: | 1 x 220-230 V |
| Rated current: | 1.3 A |
| Capacitor size - run: | 8 µF/400 V |
| Enclosure class (IEC 34-5): | IP68 |
| Insulation class (IEC 85): | F |
| Motor protec: | CONTACT |
| Thermal protec: | internal |
| Length of cable: | 5 m |
| Type of cable plug: | SCHUKO |
| Controls: | |
| Level switch: | vertical level switch |
| Others: | |
| Net weight: | 6.5 kg |
| Gross weight: | 7 kg |
| Shipping volume: | 0.013 m ³ |

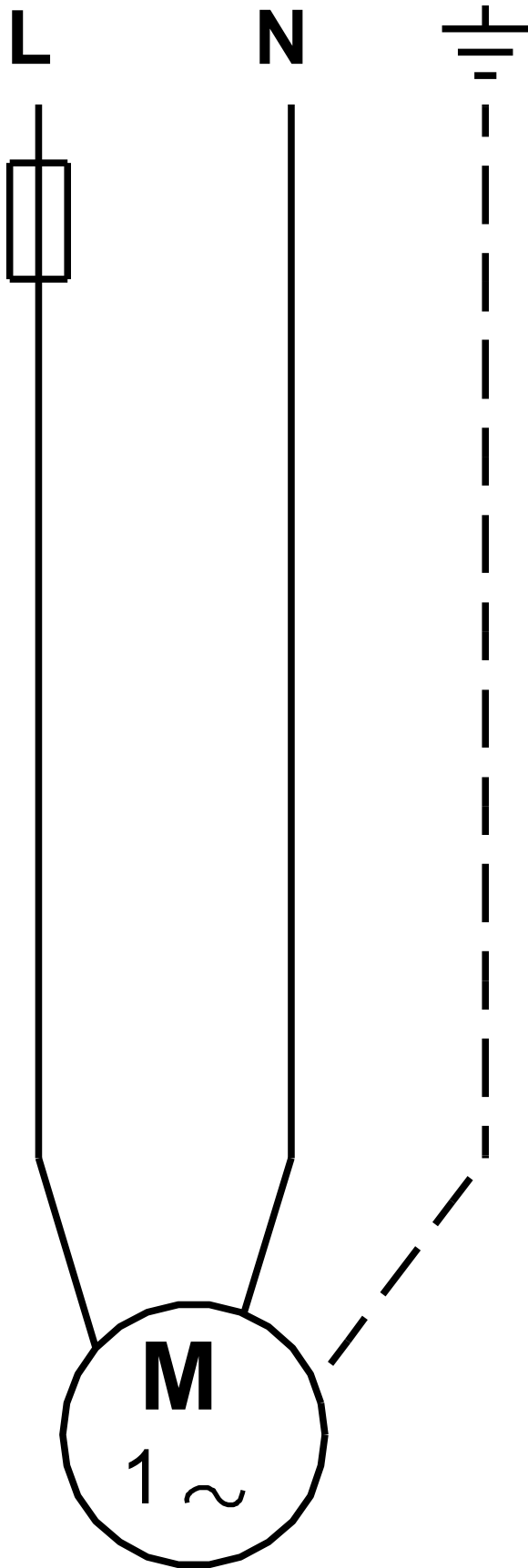


011H1400 Unilift KP 150 AV 1 50 Hz



Note! All units are in [mm] unless others are stated.
Disclaimer: This simplified dimensional drawing does not show all details.

011H1400 Unilift KP 150 AV 1 50 Hz



Note! All units are in [mm] unless others are stated.